



General purpose

Crystal luminaire is supposed to indicate emergency escape routes and emergency exits with suitable pictograms. Crystal can be adopted in public facilities or in workplaces and it is compatible with all emergency lighting systems offered by Hybrid.

Additional information about emergency lighting luminaires - p. 24

Technical data

CATEGORIES \ LIGHT SOURCE	8W lamp	LED
Power supply	230VAC/50Hz	
Power consumption	<12W	<4W
Protection class	I	
Radio noise	Level N	
Protection degree	IP 20	
Light source	TL8W - G5	White LED
Accumulator type	NiCd HT	
Recharging time	24h	
Emergency work time	1h, 2h, 3h	3h
Ambient temperature	+10°C ÷ +40°C	
Connector	4 x 0,5 ÷ 2,5 mm ² (maintained) 3 x 0,5 ÷ 2,5 mm ² (non-maintained)	



Casing

- body material: steel
- casing colour: white - RAL 9003 (different colours available)
- lamp cover: plexiglass with pictogram
- lamp cover colour: transparent

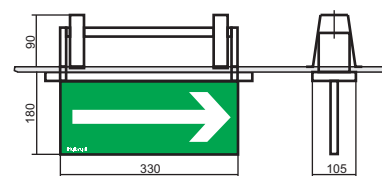
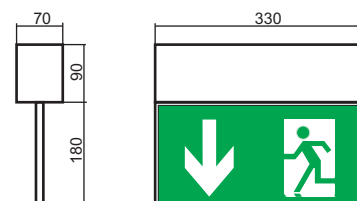
Available versions

Check final pages of this catalogue.

Mounting types

Check 3rd page of the catalogue cover.

Dimensions



Luminaire is mounted in 80mm x 345mm gap

Version with fluorescent lamp

Luminaire	Execution	T _{aw} [h]	Work mode	Mounting	Casing colour (RAL code)	Pictogram
CRYSTAL	ST	1	C	C5	□ 9003	P01
	AT	2	J	C6	■ 9005*	...
	CT	3		C7	■ 9006*	P29
	CB			W3		
	CB-MA			W4		

CRYSTAL

Example of creating a name: CRYSTAL CT 2C C5 9003 P05

Version with LED

Luminaire	Execution	Work mode	Light source	Mounting	Casing colour (RAL code)	Pictogram
CRYSTAL	ST	C	LED	C5	□ 9003	P01
	AT	J		C6	■ 9005*	...
	CT			C7	■ 9006*	P29
	CB			W3		
	CB-MA			W4		

Example of creating a name: CRYSTAL AT C LED W3 9003 P09

Version with fluorescent lamp

Luminaire	Luminaire size	Luminaire type	Execution	T _{aw} [h]	Work mode	Mounting	Casing colour (RAL code)	Pictogram
ALU			AT	1	C	W1 ¹	□ 9003	P01
	D	DW	CT	2	J	W2	■ 9005*	...
			TS	3		C1	■ 9006*	P29
			CB			C2		
			CB-MA					

ALU

Example of creating a name: ALU AT 2J W2 9003 P02

Version with LED

Luminaire	Luminaire size	Luminaire type	Execution	Work mode	Light source	Mounting	Casing colour (RAL code)	Pictogram
ALU			AT	C	LED	W1 ¹	□ 9003	P01
	D	DW	CT	J		W2	■ 9005*	...
			TS			C1	■ 9006*	P29
			CB			C2		
			CB-MA					

Example of creating a name: ALU D CT C LED C2 9003 P12

¹⁾ Mounting type W1 only for one-sided ALU luminaire.

Luminaire	Luminaire size	Luminaire type	Execution	Work mode	Light source	Mounting	Casing colour (RAL code)	Pictogram
SPARK			AT	C	LED	W1 ¹	■ 9006	P01
	D	DW	CT	J		C25	□ 9003*	...
			CB			C30	■ 9005*	P29
			CB-MA			W16		

SPARK

Example of creating a name: SPARK D AT J LED C25 9006 P05

¹⁾ Mounting type W1 only for one-sided SPARK luminaire.

Legend - p. 63

Luminaire	Type of housing	Execution	Power [W]	T _{aw} [h]	Work mode
SFERA	N	ST	1x18W	2	J
	P	AT	2x18W		
		CT	1x26W		
		CB	2x26W		
			1x32W		

SFERA

Example of creating a name: SFERA N CT 2x18W 2J

Luminaire	Type of housing	Execution	Power [W]	T _{aw} [h]	Work mode
SQUARE	N	ST	4x14W	2	J
	P	AT	4x18W		
		CT	2x36W		
		CB			

SQUARE

Example of creating a name: SQUARE P AT 4x18W 2J

Legend:

Photometric body type: see individual product data sheets.

Luminaire size:

Empty field – small

D – large.

Luminaire type or lamp cover:

N – surface mount

P – recessed

DW – luminaire two-sided or lamp cover two-sided.

Execution:

ST – standard

AT – autotest

CT – centraltest

TS – testsystem

CB – central battery,

CB-MA – central battery plus changeover module,

CB-MP – central battery plus addressing module,

CB-MAP – central battery plus changeover + addressing module .

T_{aw} [h] - emergency work time: CB is not defined.

Work mode:

C – non-maintained

J – maintained

N – night (only for CT).

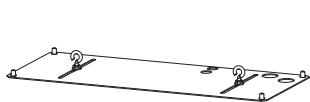
Defined for ST, AT, CT, TS, CB-MA (luminaires LED) i CB-MAP (luminaires fluorescent).

Temperature range:

Empty field - standard temperature range

T – extended temperature range (see technical data) with thermostat H-323.

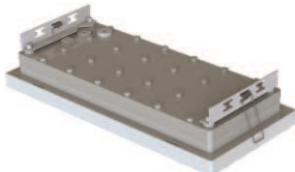
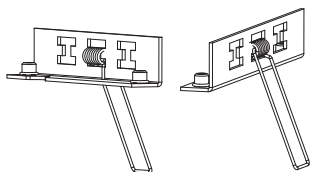
Casing colour: fields with "*" available - extended delivery time.



Mounting kit C101

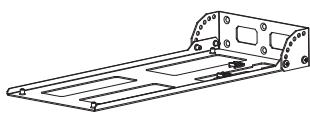
Mounting kit designed to hang down luminaires PRYMAT, PRIMOS and HERKULES-P.

ATTENTION!
Strings or chains should be ordered separately.



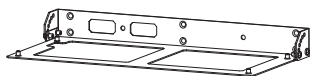
Mounting kit C105

Mounting kit designed for mounting luminaires PRIMOS, PRYMAT and HERKULES-P in suspended ceilings.



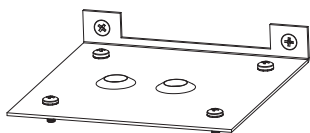
Mounting kit W121

Wall mounting kit designed for luminaires PRIMOS, PRYMAT and HERKULES-P. It allows mounting luminaire on the wall perpendicularly to it and for folding luminaire from the level 15, 30, 45, 60, 75 or 90 °. Using a mounting W121 luminaire is directed to the shorter side of wall.



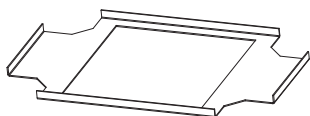
Mounting kit W122

Wall mounting kit designed for luminaires PRIMOS, PRYMAT and HERKULES-P. It allows mounting luminaire on the wall perpendicularly to it and for folding luminaire from the level 15, 30, 45, 60, 75 °. Using a mounting W121 luminaire is directed to the longer side of wall.



Mounting kit W131

Mounting kit designed for surface mounting of KWADRA luminaire on the wall in the way that the light is directed to the floor. It is recommended to use luminaire with SIDE type photometric body with mounting kit W131.



Reinforcement for soft ceilings

Addition designed for recessed execution of KWADRA luminaire. It allows mounting of luminaire in soft ceilings eg. in fiberglass ceilings.



Strings , chains

Steel strings, galvanized chains DIN 5685-A – designed for mounting pendant luminaires.

Chains available in dimension DIN 5685-A 1,5x12.

Versions - testing, monitoring

ST = Standard - emergency work test executed by turning off power supply

AT = Autotest - automatic and periodic test execution:

TEST A - lamp efficiency test, monthly;

TEST B - emergency work time measurement, annually;

CT = Centraltest - communication with the central unit or PC, full addressing of the luminaires, luminaires visualisation, system status reporting, many testing options, manual testing;

TS = Test System - communication with H-101TS central unit, many testing options, manual testing with the use of H-101TS central unit

CB = Central Battery - 220V DC power supply from central battery, built-in LED 220VDC ballast and LED module;

BU = Buffer Supply - luminaire adapted for 12-24V DC buffer feeders, built-in LED 12-24V DC ballast and LED module.

Functions

1. Automatic power supply switch: basic work/emergency work. (only ST, AT, CT and TS).
2. Luminaire and accumulator state indication (only ST, AT, CT and TS).
3. Supervision of 230V power supply voltage and accumulator condition (only ST, AT, CT and TS).
4. Deep accumulator discharge protection (only ST, AT, CT and TS).
5. Automatic test execution (only AT, CT and TS).
6. Light source work supervision.

Indication

The luminaire condition is indicated by LED. There is no LED indication during emergency mode:

Green - accumulator condition (only ST, AT, CT, TS)

Red - luminaire condition (only AT, CT, TS).

More details described in product manuals.

Lighting versions

Maintained (M) - basic lighting provided all the time (uses 230V); in case of power supply failure switches automatically into emergency mode (accumulator).

Non-maintained (NM) - standby mode as a standard (no lighting); in case of power supply failure switches automatically into emergency mode (accumulator).

Mounting types

							PROFIL
							CRYSTAL
						ALU	
						SPARK	
							PROFILIGHT
							OWA LED
KWADRA ORBIT LED			OWA ATOM LED		OWA POWER LED		
							KWADRA P
W131			KWADRA N		KWADRA P		
							PRYMAT DW
C101*				PRYMAT DW			
C105							
W121							
W122							
ACCESSORIES (ordered separately)							

* Strings or chains available on request.

¹⁾ Requires access to ceiling void.

²⁾ Only for ST, CB.

LEGEND

- CONSTANT CEILING
- SUSPENDED CEILING
- MODULAR CEILING

Pictograms

