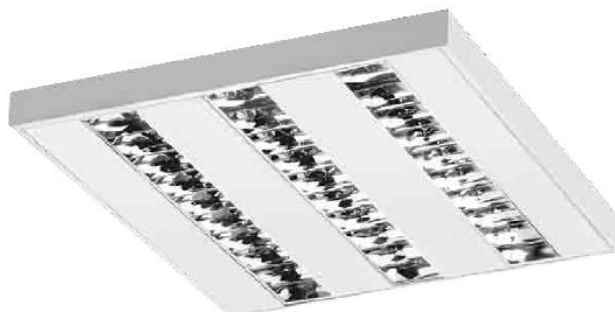


Installation manual  
 Torino II T5



CE TORINO

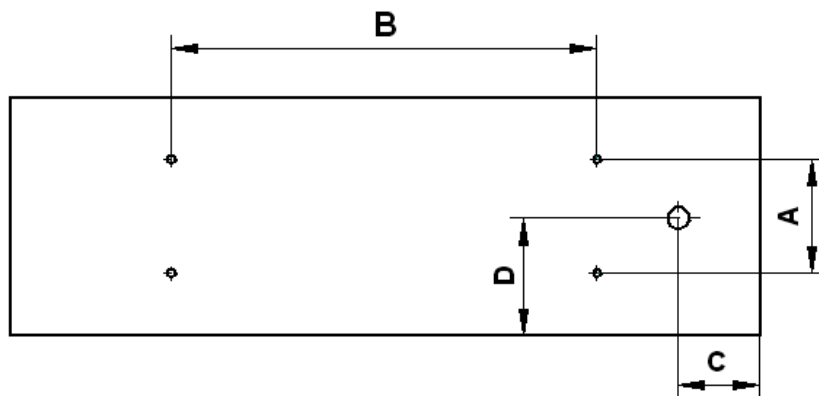


IP20



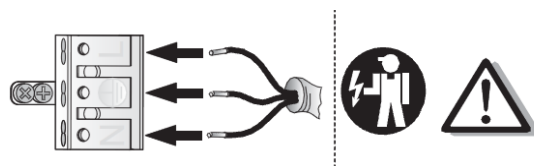
230V/50HZ T5, T8  
 1. Dimensions

Power	A	B	C	D
1x28/54W	70	788	287	20
2x28/54W	168	788	203	133
1x21/54W OPAL/PRM	130	414	309	153

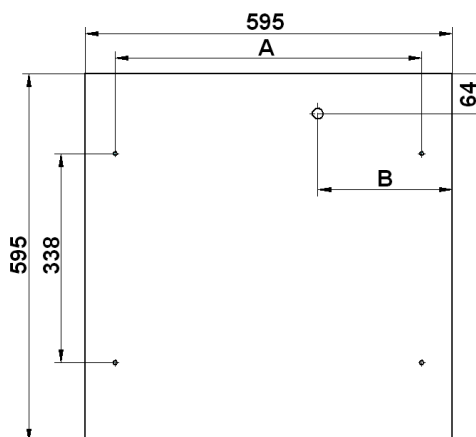


2. Assembly

- a) remove carefully luminaire from packaging and put on safety place (table of floor)
- b) open the luminaire with screwdriver (opal, prism)
- c) power connection
  - take power wire through dedicated hole in luminaire's base
  - connect cables according to signs at power cube
- d) ceiling suspension mounting:
  - luminaire is to be mounted to ceiling with four holes of 7mm diameter (3x28/54 - six holes)



Power	A	B
3x14/24W Typ A	322	217,5
4x14/24W Typ B	497	297,5
4x14/24W Typ D	314	297,5
3x14/24W OPAL/PRM	497	297,5
4x14/24W OPAL/PRM	497	297,5



**e) fluorescent lamp mounting**

- put fluorescent lamp with appropriate power in the luminaire and gently pressure into luminaire.
- rotate fluorescent lamp 90°

**f) place the louver**

- g) close the luminaire with screwdriver (opal, prism)**

**3. Important warnings:**

The manufacturer cannot be considered liable for any damages deriving from improper, wrong and unreasonable use of the fitting.

Luminaries may be installed by qualified personnel only.

Any manipulation inside the luminaire when power supply is on causes the risk of electric shock.

Manufacturer is not responsible for any flaws caused by avoid using this manual.

Manufacturer reserves a right to change the construction of the product.

Do not assembly in places without air circulation.

To guarantee safety of luminaire functions, please assembly according to instruction.



The European Directive 2002/96/EC on waste electrical and electronic equipment, requires that electric and electronic devices must be disposed of in the normal household waste. The crossed out wheeled bin is reproduced in order to remember obligations towards separately collection. For correct disposal, please use authorized waste disposal facilities or returned to the distributor at the date a new lighting fitting is purchased. Lamps, if disposed together with the lighting fitting, shall not be broken up since they contain substances which are highly polluting for the environment. Unauthorized disposal of the foregoing waste material is punishable by law. More details of directive available at: <http://www.gios.gov.pl>

