

Assembly instruction **Monza II T5**

MONZA II T5



IP20



EL

230V/50HZ T5

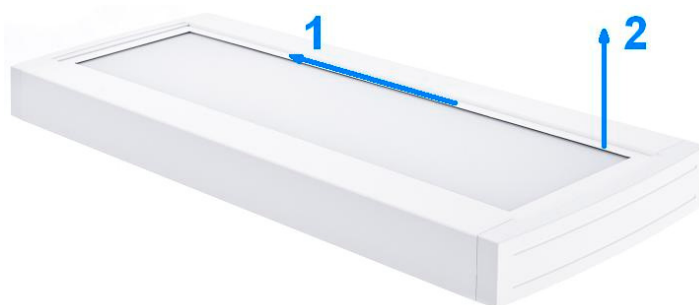
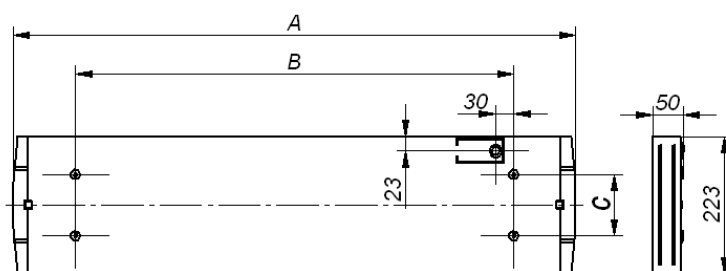
1. Dimensions and weight

Power	A	B*	C	Weight [kg]**
2x14/24	619	414	76/137	1,7/1,8kg
2x21/39	919	414	76/137	2,5/2,7kg
2x28/54	1219	900/1070	76/137	3,3/3,6kg
2x35/49/80	1519	900/1070	76/137	4,1/4,4kg
2x14/24+MS	689	414	76/137	2,1/2,2kg
2x21/39+MS	989	414	76/137	2,9/3,1kg
2x28/54+MS	1289	900/1070	76/137	3,7/4kg
2x35/49/80+MS	1589	900/1070	76/137	4,5/4,8kg

* Ceiling/Suspended mounting holes

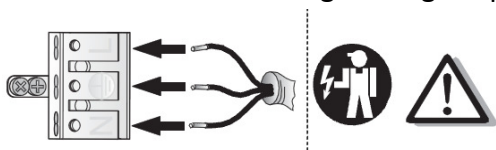
** Louver/Plate version

MS – Motion Sensor

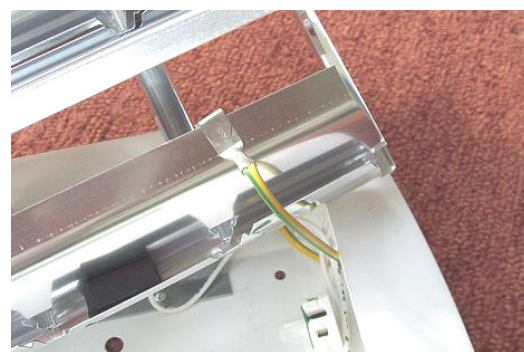


2. Assembly

- using gloves remove louver or frame out of body
- put power cable through the hole in base of frame
- connect cables according to signs at power cube



- mount the fixture to the ceiling
- put the safety wire on the louver
- place the louver or frame into the body



3. Important warnings:

- the manufacturer cannot be considered liable for any damages deriving from improper, wrong and unreasonable use of the fitting.
- luminaires may be installed by qualified personnel only.
- any manipulation inside the luminaire when power supply is on causes the risk of electric shock.
- manufacturer is not responsible for any flaws caused by avoiding using this manual.
- manufacturer reserves a right to change the construction of the product



The European Directive 2002/96/EC on waste electrical and electronic equipment, requires that electric and electronic devices must be disposed of in the normal household waste. The crossed out wheeled bin is reproduced in order to remember obligations towards separately collection. For correct disposal, please use authorized waste disposal facilities or returned to the distributor at the date a new lighting fitting is purchased. Lamps, if disposed together with the lighting fitting, shall not be broken up since they contain substances which are highly polluting for the environment. Unauthorized disposal of the foregoing waste material is punishable by law. More details of directive available at: <http://www.gios.gov.pl>

