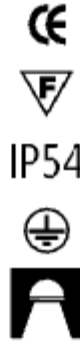


Assembly instruction  
**Latte IP54**

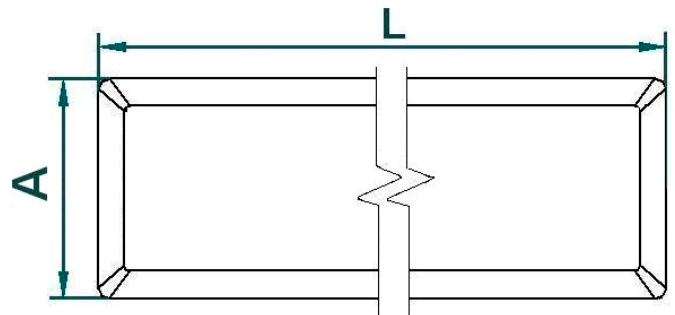
**LATTE IP54**



**230V/50HZ T8,T5,TCL,TCD,TCS**

**1. Sizes**

Moc [W]	A [mm]	L [mm]	Waga [kg]
2x9/18	270	270	0,9
1x18/26	270	270	0,9
1x18/14/24	110	670	1,25
1x36/28/54	110	1270	1,7
1x35/49/58/80	110	1570	2,0
1x18/14/24	200	670	2/1,6/1,6
1x36/28/54	200	1270	2,7/2,3/2,3
1x58/35/49/80	200	1560	3,3/2,8/2,8/2,8
2x18/14/24	200	670	2,1/1,7/1,7
2x36/28/54	200	1270	3,2/2,4/2,4
2x58/35/49/80	200	1560	3,8/2,9/2,9/2,9
4x14/18	670	670	4,15



**Height of the fixture: H=70mm**

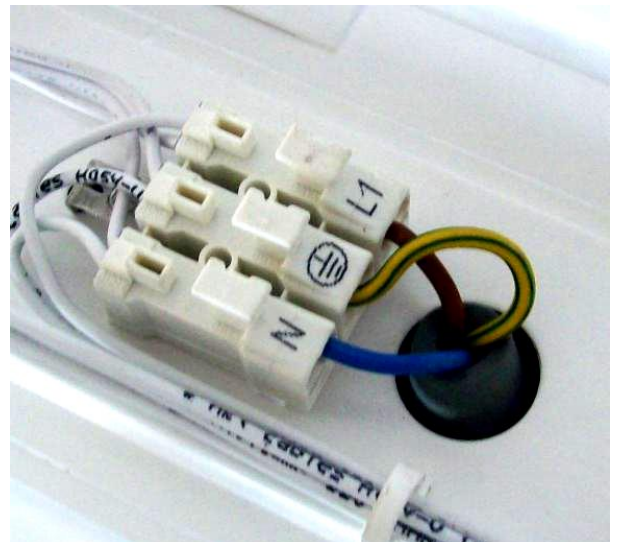
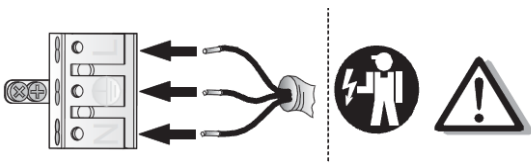
**2. Assembly**

- a) remove carefully fixture from packaging and put in safety and stable place (table or floor)
- b) using gloves take off the diffuser



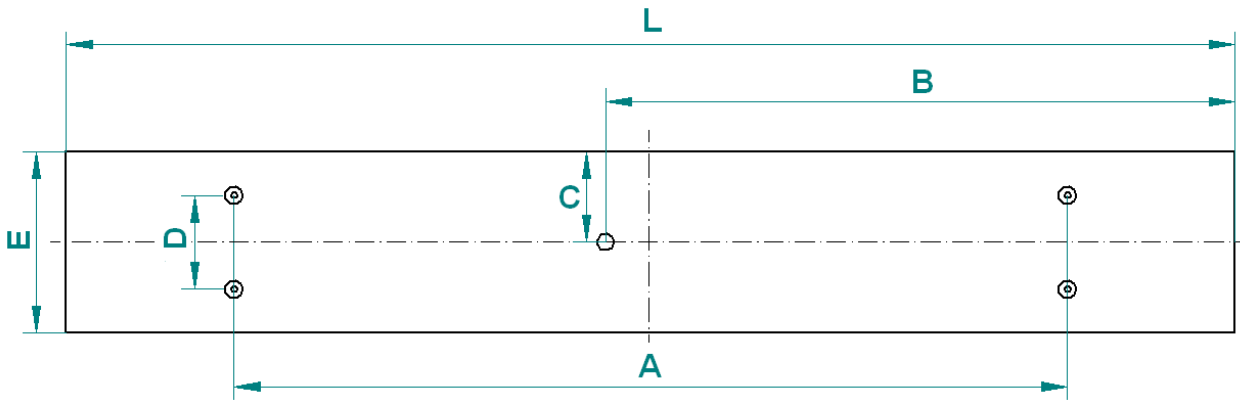
c) power connection

- put power cable through the hole in base of frame
- connect cables according to signs at power cube



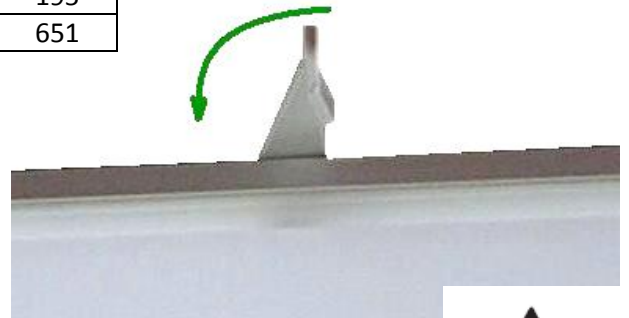
d) assembly fixture to the ceiling:

- fixture is fixed to the ceiling with four or two holes of 7mm diameter



Moc	L	A	B	C	D	E
2x9/18	250	200	42	94	200	250
1x18/26	250	200	42	94	200	250
1x18/14/24	652	500	162	70	s	93
1x36/28/54	1262	1100	160	70	s	93
1x35/49/58/80	1556	1200	220	70	s	93
1x18/14/24	662	300	575	49	101	195
1x36/28/54	1262	960	680	49	101	195
1x58/35/49/80	1558	1240	830	49	101	195
2x18/14/24	662	300	575	s	101	195
2x36/28/54	1262	960	680	s	101	195
2x58/35/49/80	1558	1240	830	s	101	195
4x14/18	651	300	93	s	400	651

s – hole symmetrically in the fixture



e) fluorescent lamp mounting

- put fluorescent lamp in the fixture
- rotate fluorescent lamp 90°

f) assembly the diffuser to the fixture and rotate the clamps

**3. Important warnings:**

- the manufacturer cannot be considered liable for any damages deriving from improper, wrong and unreasonable use of the fitting.
- luminaires may be installed by qualified personnel only.
- any manipulation inside the luminaire when power supply is on causes the risk of electric shock.
- manufacturer is not responsible for any flaws caused by avoid using this manual.
- manufacturer reserves a right to change the construction of the product
- do not assembly in places without air circulation.
- to guarantee safety of fixture functions, please assembly according to instruction

The European Directive 2002/96/EC on waste electrical and electronic equipment, requires that electric and electronic devices must be disposed of in the normal household waste. The crossed out wheeled bin is reproduced in order to remember obligations towards separately collection. For correct disposal, please use authorized waste disposal facilities or returned to the distributor at the date a new lighting fitting is purchased. Lamps, if disposed together with the lighting fitting, shall not be broken up since they contain substances which are highly polluting for the environment. Unauthorized disposal of the foregoing waste material is punishable by law. More details of directive available at: <http://www.gios.gov.pl>

