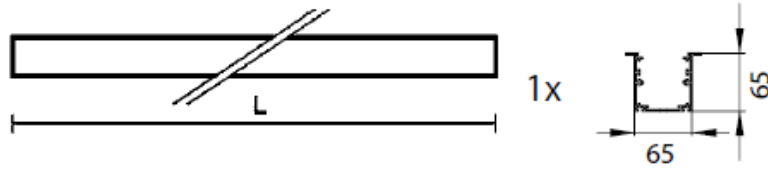
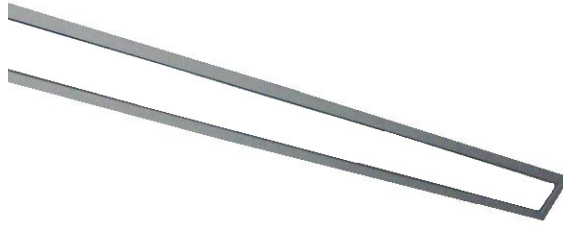


Installation manual
VIP GK IP44



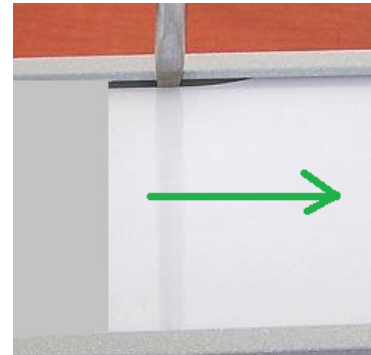
230V/50Hz T5

1. Weight, dimensions

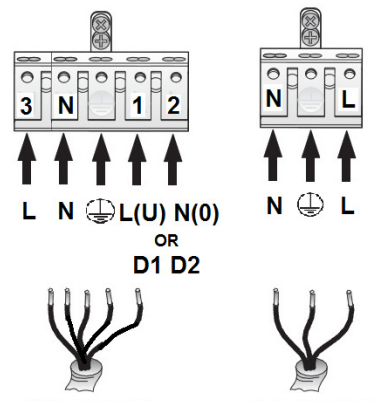
Power	Weight	+Emergency Module (EM)	DALI+EM	L [mm]	EM	DALI+EM
1x14/24	2,0kg	3,6kg	-	583	+300mm	-
1x21/39	2,6kg	4,1kg	4,5kg	883	+300mm	+500mm
1x28/54	3,2kg	4,7kg	5,1 kg	1183	+300mm	+500mm
1x35/49/80	3,8kg	5,5kg	6,1kg	1483	+300mm	+500mm

2. Assembly

- a) push the opal diffuser towards the longer edge of the fixture and take the diffuser out from the fixture by levering it
- b) unscrew the reflector



- c) power supply connection:
 put the feeding cable through the hole in the base of a fixture and connect the wires as shown on a cube and on the picture on the right



d) installation in the gypsum plasterboard ceiling:

- put the mounting brackets into the mounting hole to fit the spread shown in a table below
- put the fixture into the hole so the screws from mounting brackets will go through the mounting holes in the fixture
- put the gasket on the head of a screw
- tighten the screws – fixture will get pulled against the ceiling



Mounting holes dimensions and mounting brackets spread:

Power [W]	Mounting holes			Brackets spread		
	Standard	+EM	DALI+EM	Standard	+EM	DALI+EM
1x14/24	593x70	893x70	1093x70	383	683	883
1x21/39	893x70	1193x70	1393x70	653	953	1153
1x28/54	1193x70	1493x70	1693x70	953	1253	1453
1x35/49/80	1493x70	1793x70	1993x70	1253	1553	1753

e) lamps installation:

- put the fluorescent lamps of proper power into the lamp holders and into the clamps
- turn the lamps by 90 degrees
- put the opal diffuser in

3. Important warnings:

The manufacturer cannot be considered liable for any damages deriving from improper, wrong and unreasonable use of the fitting.

Luminaries may be installed by qualified personnel only.

Any manipulation inside the luminaire when power supply is on causes the risk of electric shock.

Manufacturer is not responsible for any flaws caused by avoid using this manual.

Manufacturer reserves a right to change the construction of the product.

Do not assembly in places without air circulation.

To guarantee safety of fixture functions, please assembly according to instruction.



The European Directive 2002/96/EC on waste electrical and electronic equipment, requires that electric and electronic devices must be disposed of in the normal household waste. The crossed out wheeled bin is reproduced in order to remember obligations towards separately collection. For correct disposal, please use authorized waste disposal facilities or returned to the distributor at the date a new lighting fitting is purchased. Lamps, if disposed together with the lighting fitting, shall not be broken up since they contain substances which are highly polluting for the environment. Unauthorized disposal of the foregoing waste material is punishable by law.

