



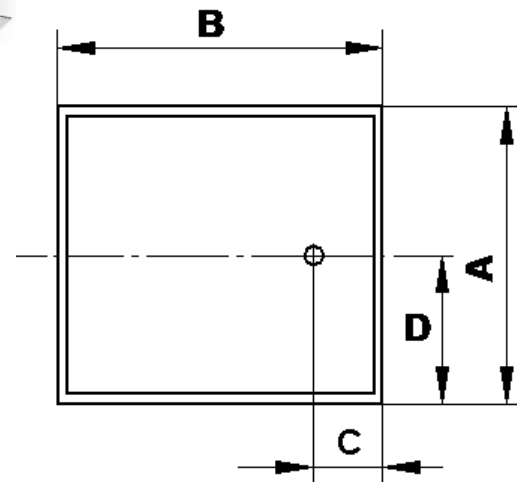
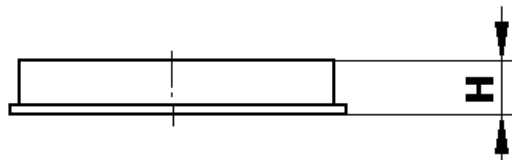
Installation manual
Imola



230V/50HZ TL

1. Dimensions

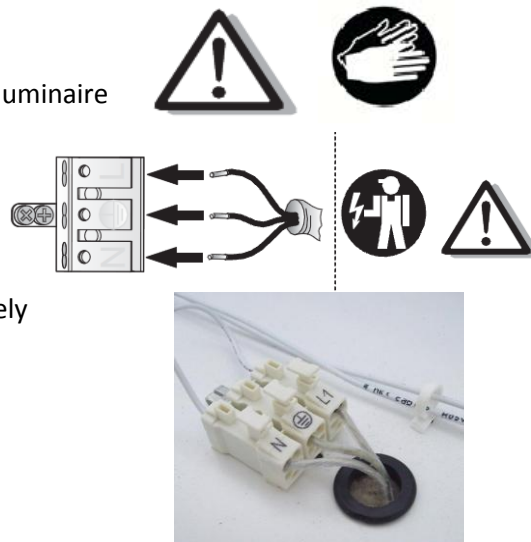
Power	L	Weight(kg)
2x36W	637	5,5/6,3
2x40W	937	5,5
2x55W	1237	5,5



All luminaires dimensions: A=595mm, B=595mm, C=75mm, D=297,5mm, H=100mm

2. Installation

- a) carefully take luminaire out of box and put it on a stable surface (floor or table)
- b) using gloves carefully take lamp screen out of luminaire and put the luminaire on the ceiling construction,
- c) connecting the power supply:
 - put the power supply cable through the hole in the base of a luminaire and connect the wires as it's shown on a cube
- d) push reflector into the frame
- e) slip the fluorescent lamps of proper power into luminaire and delicately push them into the sockets
- f) place grounding wire (green/yellow) on a lamps screen
- g) put lamp screen in the luminaire and screw the frame on



3. Important warnings:

The manufacturer cannot be considered liable for any damages deriving from improper, wrong and unreasonable use of the fitting.
 Luminaries may be installed by qualified personnel only.
 Any manipulation inside the luminaire when power supply is on causes the risk of electric shock.
 Manufacturer is not responsible for any flaws caused by avoid using this manual.
 Manufacturer reserves a right to change the construction of the product.
 Do not assembly in places without air circulation.
 To guarantee safety of luminaire functions, please assembly according to instruction.



The European Directive 2002/96/EC on waste electrical and electronic equipment, requires that electric and electronic devices must be disposed of in the normal household waste. The crossed out wheeled bin is reproduced in order to remember obligations towards separately collection. For correct disposal, please use authorized waste disposal facilities or returned to the distributor at the date a new lighting fitting is purchased. Lamps, if disposed together with the lighting fitting, shall not be broken up since they contain substances which are highly polluting for the environment. Unauthorized disposal of the foregoing waste material is punishable by law. More details of directive available at: <http://www.gios.gov.pl>

