

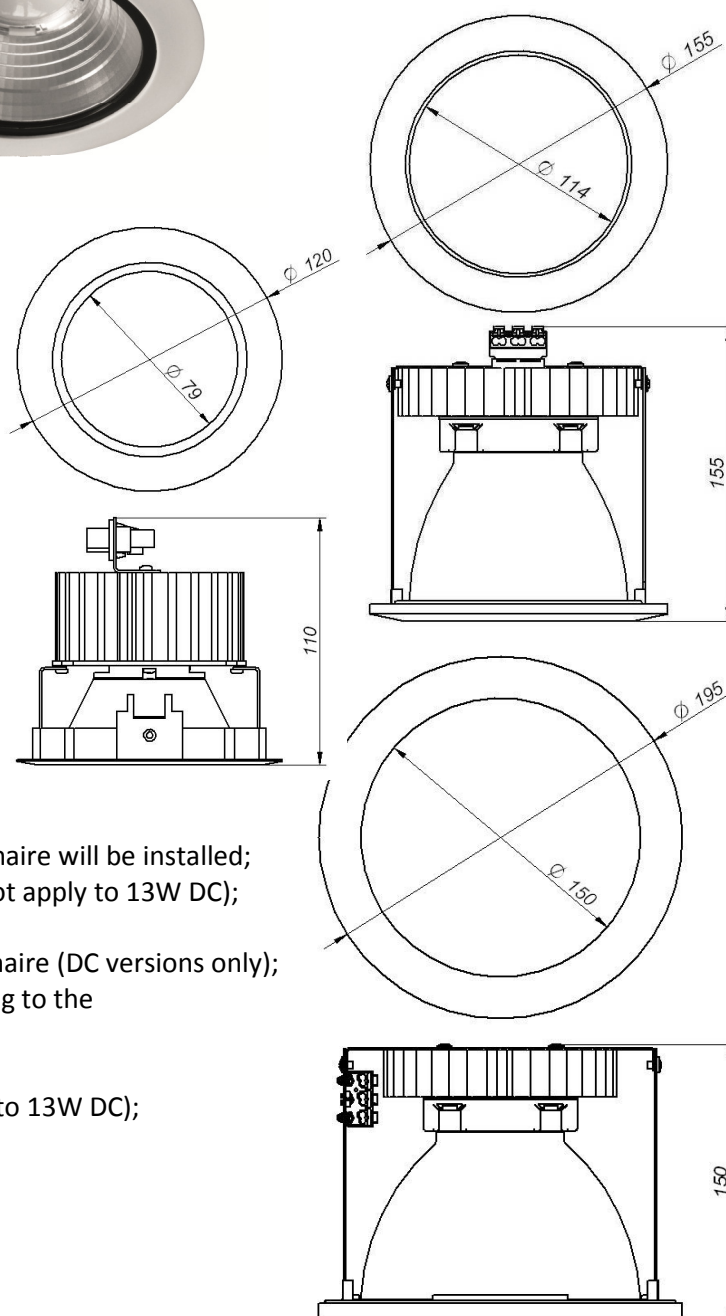


Installation manual
 BARI II LED AC/DC 155
 BARI II LED AC/DC 195
 BARI II MINI LED DC 120
 230V/50HZ

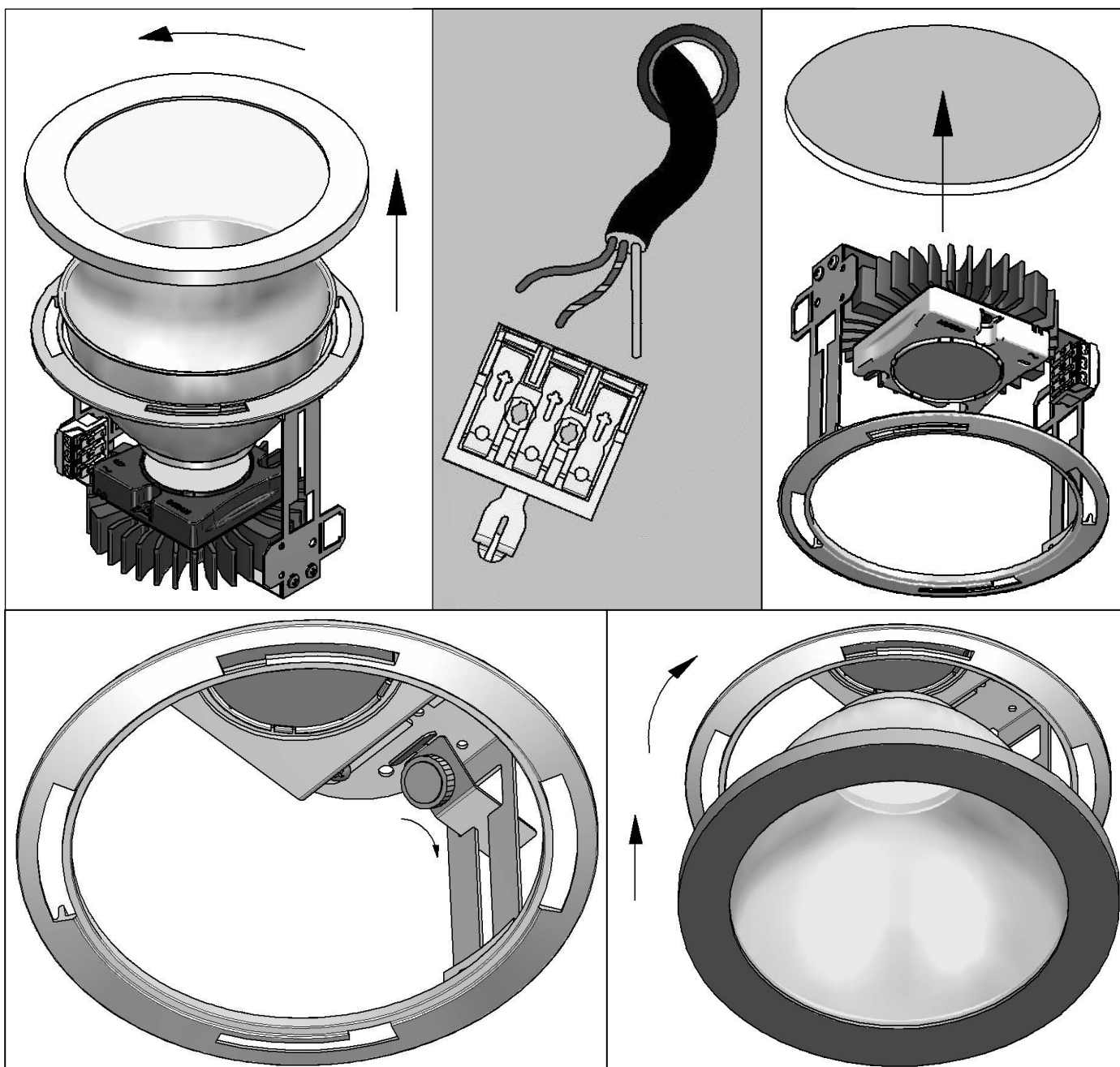


Power [W]	Diameter [mm]	Installation hole diameter [mm]	Weight [kg]
15 AC	195	172	1,3
15 DC	195	172	1,4
25 AC	195	172	1,3
25 DC	195	172	1,4
15 AC	155	138	1,1
15 DC	155	138	1,2
25 AC	155	138	1,1
25 DC	155	138	1,2
13 DC	120	110	1

*IP44 from the front after installation

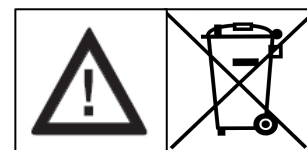


- a) turn off the power supply in the circuit in which luminaire will be installed;
- b) turn and take off the ring from the luminaire (does not apply to 13W DC);
- c) take off the reflector (does not apply to 13W DC);
- d) connect the adapter plug with the socket in the luminaire (DC versions only);
- e) connect the wires to the cube/power supply according to the designation on the cube/power supply;
- f) put the luminaire into the hole in the ceiling;
- g) install the pud holding the luminaire (does not apply to 13W DC);
- h) put the reflector back in (does not apply to 13W DC);
- i) put the ring back on (does not apply to 13W DC).



Important warnings:

Do not install the luminaires in areas without an exchange of air.
 The manufacturer cannot be considered liable for any damages deriving from improper, wrong and unreasonable use of the fitting.
 Luminaires may be installed by qualified personnel only.
 Any manipulation inside the luminaire when power supply is on causes the risk of electric shock.
 Manufacturer is not responsible for any flaws caused by avoid using this manual.
 Manufacturer reserves a right to change the construction of the product.



The European Directive 2002/96/EC on waste electrical and electronic equipment, requires that electric and electronic devices must be disposed of in the normal household waste. The crossed out wheeled bin is reproduced in order to remember obligations towards separately collection. For correct disposal, please use authorized waste disposal facilities or returned to the distributor at the date a new lighting fitting is purchased. Lamps, if disposed together with the lighting fitting, shall not be broken up since they contain substances which are highly polluting for the environment. Unauthorized disposal of the foregoing waste material is punishable by law.