

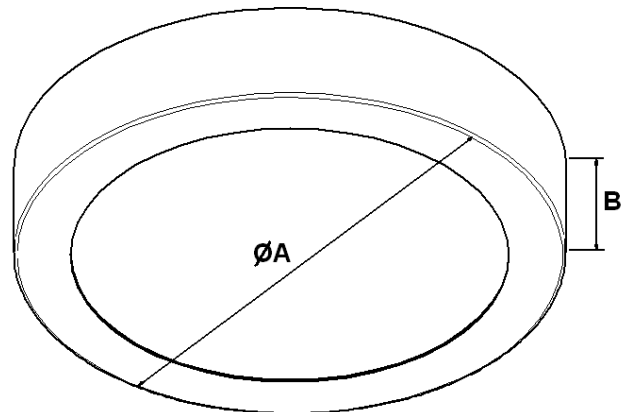
Assembly instruction
Finestra Ring



230V/50HZ

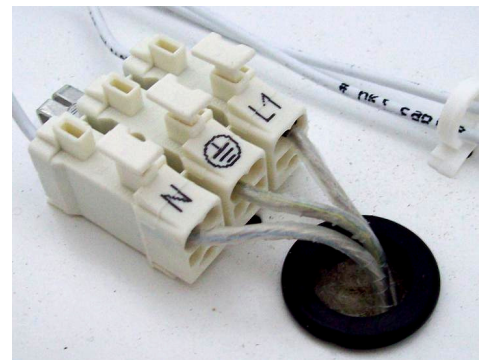
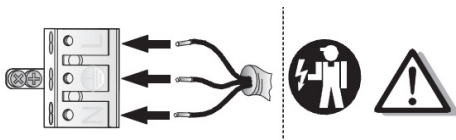
1. Dimensions and weight

Power	A	B	stat	Weight
2x18/24	440	75	VVG	3,6kg
2x18/24	440	75	EVG	3,1kg
1x22	440	75	EVG	3,1kg
2x36	520	75	VVG	5,4kg
4x18/24	520	75	VVG	5,4kg
4x18/24	520	75	EVG	4,6kg
1x55	520	75	EVG	4,6kg
LED 21W	440	75	EVG	3,1kg
LED 30W	520	75	EVG	4,6kg



2. Assembly

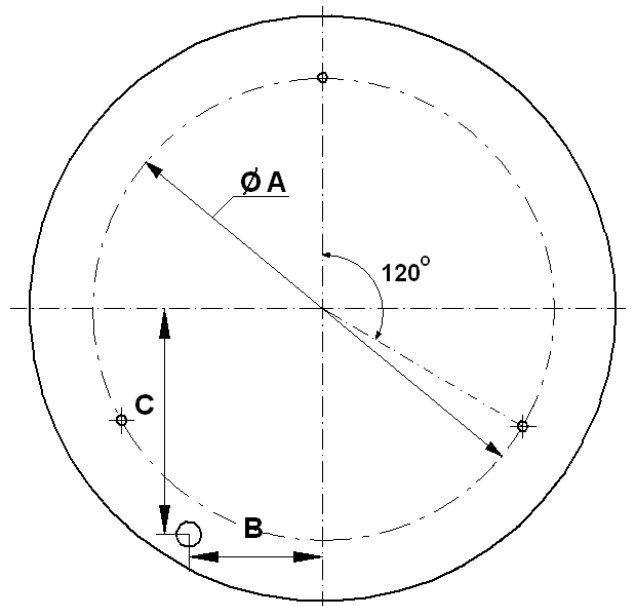
- a) remove carefully fixture from packaging and put in safety and stable place (table or floor)
- b) turn round and take off the frame of fixture
- c) place stretcher pegs according to holes base in the plate of fixture
- d) power connection
 - put power cable through the hole in base of frame
 - connect cables according to signs at power cube



e) assembly to the wall/ceiling/suspension

- assembly to the wall/ceiling: fixture assembled with three holes of 7mm diameter

Power	A	B	C
2x18/24 1x22	288	143	123
21W LED	328	143	123
2x36 4x18/24 1x55 30W LED	415	222	5,5



For suspension mounting please drill the holes for 8mm diameter.

f) lamp assembly

- lamps of the correct power put in the sockets and clamps

g) cover and turn the frame of fixture

3. Important warnings:

- the manufacturer cannot be considered liable for any damages deriving from improper, wrong and unreasonable use of the fitting.
- luminaries may be installed by qualified personnel only.
- any manipulation inside the luminaire when power supply is on causes the risk of electric shock.
- manufacturer is not responsible for any flaws caused by avoid using this manual.
- manufacturer reserves a right to change the construction of the product.
- do not assembly in places without air circulation.
- to guarantee safety of fixture functions, please assembly according to instruction.



The European Directive 2002/96/EC on waste electrical and electronic equipment, requires that electric and electronic devices must be disposed of in the normal household waste. The crossed out wheeled bin is reproduced in order to remember obligations towards separately collection. For correct disposal, please use authorized waste disposal facilities or returned to the distributor at the date a new lighting fitting is purchased. Lamps, if disposed together with the lighting fitting, shall not be broken up since they contain substances which are highly polluting for the environment. Unauthorized disposal of the foregoing waste material is punishable by law. More details of directive available at: <http://www.gios.gov.pl>

