

Installation manual  
Torino



CE TORINO



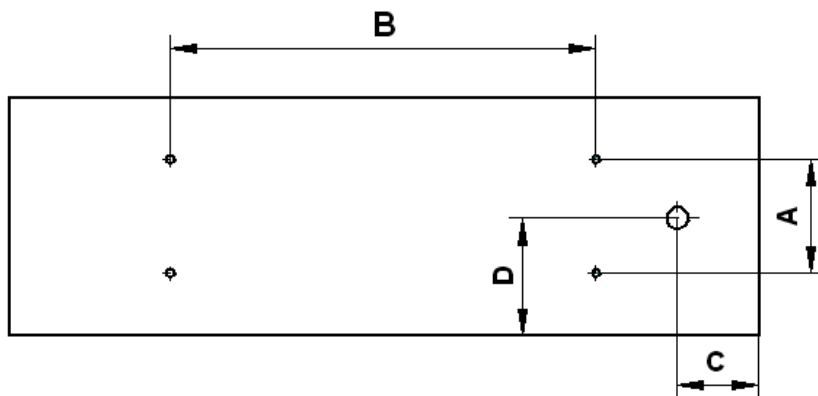
IP20



230V/50HZ T5, T8

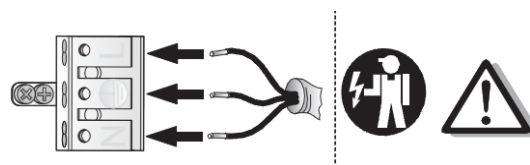
1. Dimensions

Power	A	B	C	D
1x36W	90	1023	617	25
1x58W	90	1323	760	25
2x18W	130	414	309	153
2x36W	130	1023	613	153
2x58W	130	1323	763	153
4x18W	496	414	309	305
4x36W	496	1323	613	305



2. Assembly

- a) remove carefully luminaire from packaging and put on :  
(table of floor)
- b) open the luminaire with screwdriver (opal, prism)
- c) power connection
  - take power wire through dedicated hole in luminaire's base
  - connect cables according to sings at power cube
- d) ceiling suspension mounting:
  - luminaire is to be mounted to ceiling with four holes of 7mm diameter (3x28/54 - six holes)
- e) fluorescent lamp mounting
  - put fluorescent lamp with appropriate power in the luminaire and gently pressure into luminaire.
  - rotate fluorescent lamp 90°
- f) place the louver
- g) close the luminaire with screwdriver (opal, prism)



3. Important warnings:

The manufacturer cannot be considered liable for any damages deriving from improper, wrong and unreasonable use of the luminaire. Luminaries may be installed by qualified personnel only. Any manipulation inside the luminaire when power supply is on causes the risk of electric shock. Manufacturer is not responsible for any flaws caused by avoid using this manual. Manufacturer reserves a right to change the construction of the product. Do not assembly in places without air circulation. To guarantee safety of luminaire functions, please assembly according to instruction.



The European Directive 2002/96/EC on waste electrical and electronic equipment, requires that electric and electronic devices must be disposed of in the normal household waste. The crossed out wheeled bin is reproduced in order to remember obligations towards separately collection. For correct disposal, please use authorized waste disposal facilities or returned to the distributor at the date a new lighting fitting is purchased. Lamps, if disposed together with the lighting fitting, shall not be broken up since they contain substances which are highly polluting for the environment. Unauthorized disposal of the foregoing waste material is punishable by law. More details of directive available at: <http://www.gios.gov.pl>

