

Circle LED



High-grade luminaire with a subtle and evenly distributed light beam. Circle is equipped with opal diffuser blending harmoniously with the surface of the ceiling. LED light sources version. Perfect choice for offices, corridors and lobbies.

Materials: powder painted housing made of steel sheets (standard color: white), opal diffuser made of PMMA

Installation: for cardboard ceiling, for 600x600 ceiling

Power: 230V

ELECTRICAL DATA

Light source	LED
Number of light sources	1
Light source power	40W
Type of equipment	AC
For emergency lighting	Yes
Voltage rating	230 V
Light source included	Yes
Luminaire power	40 W

MECHANICAL DATA

Type of installation	Recessed
Housing material	Steel sheet
Designed for light-line	No

INFROMATIONS

Color	White
Rotated model	No

MATERIALS

Product code	Light source power [W]	Luminaire luminous flux [lm]	Luminaire luminous efficacy [lm/W]	Color temperature [K]	Info	Weight [kg]
PX2063901	1×40	1999	50	3000	600x600	4.2
PX2063908	1×40	2063	52	4000	600x600	4.2
PX2063904	1×40	1999	50	3000	GK	3.0
PX2063911	1×40	2063	52	4000	GK	3.0

CERTIFICATES

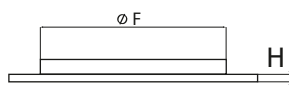
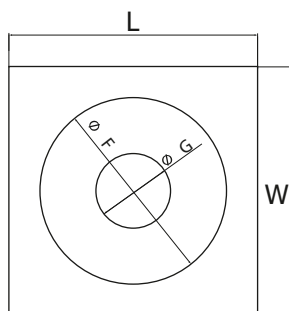
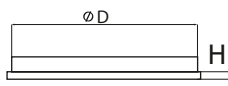
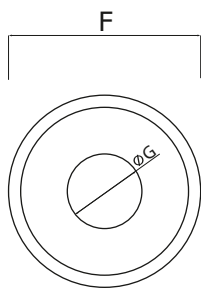
Degree of protection (IP)	IP40
Class of protection	I
Light source protection	Yes
Energy class	A
CE	Yes
For ceiling installation, fire class "F" (L)	Yes

LIGHT DATA

Light color	White
Light distribution	Mid beam
Light distribution	DI
Class of luminaire	I

OPTICAL DATA

Louver/shutter	OPAL
Diffuser color	White
Diffuser material	Opal plastic



DIMENSIONS

Product code	L [mm]	W [mm]	H [mm]	F [mm]	G [mm]	D [mm]
PX2063901	595	595	96	450	170	450
PX2063908	595	596	96	450	170	450
PX2063904	450	450	96	486	171	449
PX2063911	450	450	96	486	171	449

L = Length | W = Width | H = Height / Depth | F = Outer diameter | G = Inner diameter | D = Installation width