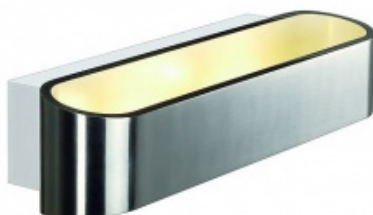


# ASSO 300 LED wall light, oval, alu brushed, 2x 5W LED, 3000K

Kod produktu: 66331



## Dane techniczne:

- Lamp **planar LED 5W**
- Number of light sources **2**
- Lamp included **Yes**
- Gross weight **0.779 kg**
- Net weight **1.042 kg**
- Voltage **230 Volt**
- Max. wattage **12 Watt**
- Protection class **I**
- Colour **aluminium brushed**
- Material **aluminium / steel**
- Remark 1 **LED driver incorporated**
- Way of mounting **surface wall mounting**
- Remark 2 **Energy labels in your language are available in the Service Area sub point Download**
- Suitable for lamps from EEC **A**
- Suitable for lamps up to EEC **A++**
- Light distribution type 1 **direct-indirect**
- Light distribution type 3 **axisymmetric**
- Height **7 cm**
- Width **30 cm**
- Depth **9.5 cm**
- Average lifespan **30000 Hours**
- Colour temperature **3000 Kelvin**
- Colour rendering index **> 80**
- Luminous flux **600 lm**

The distinctive LED up/down wall mounted luminaire ASSO 300 is equipped with two ultra-modern, powerful COB LED which emits its warm white light indirectly. Thus it is ideal for glare-free lighting of stairs, staircases and rooms. Due to the incorporated constant current LED driver, placed within the canopy, the electrical connection is made directly to 230V mains supply. This luminaire contains built-in LED lamps. EEK: A - A++. The lamps cannot be changed in the luminaire.